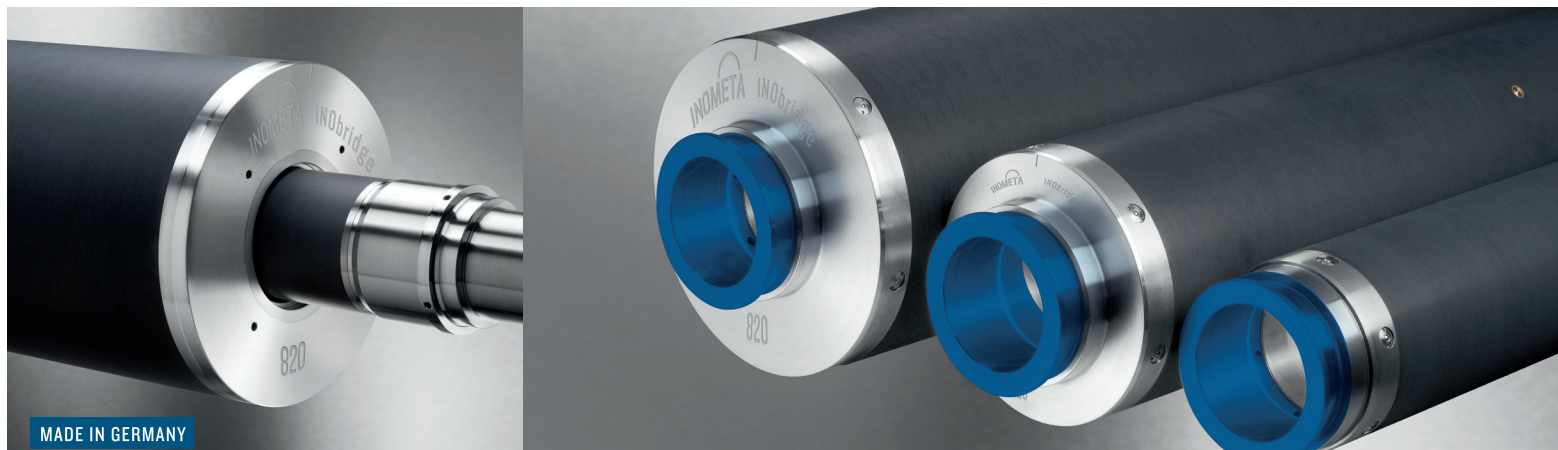


INOflex[®] INObriidge[®] CH Proline

The hydraulically clamped CFRP Proline adapter with wear resistant PROTEK[®] coating is the entry into the high-end range of flexographic printing. The CFRP base core comprises optimized rigidity, a great extent of coupling stiffness a wide range of equipment options. A CFRP bridge adapter with original equipment manufacturer quality, which guarantees high speeds and optimum print quality. Due to its excellent handling, the on/off sleeving process is considerably alleviated and set-up times are optimised.



MADE IN GERMANY

ASSEMBLY

- On hydraulic shafts
- Min. 6 bar/ max. 10 bar compressed air
- Min. air volume: 12 litres/sec.

MINIMUM POSSIBLE FORMAT JUMPS

- 10 format jumps as standard

POSSIBLE CLAMPING POINTS DIAMETERS

- Min. 85 mm
- Max. 245 mm

LENGTH*

- Min. 650 mm
- Max. 2000 mm
- From 2000 mm, refer to INObriidge[®] MAX range

DIAMETER TOLERANCES

- \leq Format 700 (\emptyset 216,567 mm) +0,015 mm / +0,000
- Optional: +0,030 mm / +0,000
- $>$ Format 700 (\emptyset 216,567 mm) +0,018 mm / +0,000
- Optional: +0,035 mm / +0,000

POSSIBLE OUTER FORMATS*

- Min. outer

Stork:	350 (\emptyset 105,158 mm)
Pitch Gear:	13,875 (\emptyset 105,830 mm)
- Max. outer

Stork:	1400 (\emptyset 439,134 mm)
Pitch Gear:	55,125 (\emptyset 439,340 mm)
- From 1400 Stork (\emptyset 439,134 mm), refer to INObriidge[®] MAX range

PULL RING

- Aluminium (blue anodized)

CHARACTERISTICS AT A GLANCE

- Significant weight reduction with maximum rigidity
- Excellent damping properties and reduction of vibrations
- Easier handling thanks to its light weight
- Precise print results, particularly at high speeds
- The stable hydraulic clamping minimises the points of contact between the adapter and shaft
- The adapter design is based on the bridge principle, which enables a significantly shorter force transmission to the shaft. In conjunction with optimised CFRP laminate structure, this provides the minimal degree of total deformation.

*Further dimensions on request

Last updated: 08/2023

INOflex[®] INObriidge[®] CH Proline

COATING

- Electrically conductive in accordance with ATEX 2014/34/EU
- Wear resistant PROTEK[®] 3340 (Hardness 90 Shore D)
- Optional dirt-repellant surface sealing PROTEK[®] 9003
- Rz 4-10 µm

TEMPERATURES

- Areas of application up to 60°C

SERVICE

In addition to the new production in original equipment manufacturer quality, INOMETA offers an overhauling and repair service for your used hydraulic CFRP bridge adapters.

INSERT MATERIAL

- Aluminium/stainless steel
- Choice of material is dependent on the format

BUSHING/HUB MATERIAL

- Steel unhardened
- Optionally hardened

AIR OUTLET (OPERATOR SIDE/ROLLER BODY)

- Drilled plastic insert
- Optional ball valves

RUN OUT

- 0,010 mm

INOFLEX[®] REGISTRATION

- INOpin steel reinforced
- Optional parallel key
- Optional stop angle

CLEANING

- For cleaning, we recommend BioClean 2000 from our INOcare[®] range
- Resistant against conventional solvents used in flexographic printing
- Also observe our operating and cleaning instructions

INOflex[®]

With our INOflex[®] product range – a comprehensive solution for flexographic printing – INOMETA offers a full portfolio of lightweight products for use in printing units and other areas of flexographic printing machines. As a specialist in rotating printing unit components, INOMETA develops and produces components that are designed to work perfectly together, including anilox rollers and anilox sleeves, CFRP bridge adapters with hydraulic or pneumatic clamping systems and CFRP shafts. INOMETA is also the leading specialist of web-guiding rollers and winding cores.