

CLEANING WITH INOflex[®] BIOCLEAN 2000



Following a regular and properly executed cleaning regime is essential to preserve the quality of anilox roller surfaces and guarantee a long service life. If these components are not cleaned properly or at sufficiently regular intervals, the cell structure becomes increasingly clogged, making the surface more difficult to clean in the long run. Improper cleaning results in poor colour transfer and ultimately in lower quality

printing results. Cleaning the roller surfaces when the print run is paused or at the end of the job is an essential part of anilox roller maintenance. BioClean 2000 was developed to make this critical maintenance process easier for users with an automatic cleaning system. Powders and other aggressive cleaning agents should not be used on these components, as they can damage the ceramic surface.

DATA OVERVIEW

Machine	Alphasonics
Type	Ultrasonic model
Lines	45-700 L/cm
Temperature	40-50°
Time	15-20 min. depending on residue build-up
Ration	90% water, 10% cleaner (1:10)
PH	8-9 diluted (1:10)
Available containers	1 litre, 10 litre, 30 litre, 200 litre, 1000 litre

For comprehensive information and safety data relating to the use of BioClean 2000, please consult the product safety data sheets at www.inometa.de.

Gloves must be worn at all times during cleaning and when handling our cleaning products.

AUTOMATIC CLEANING PROCESS

CLEANING STEP 1



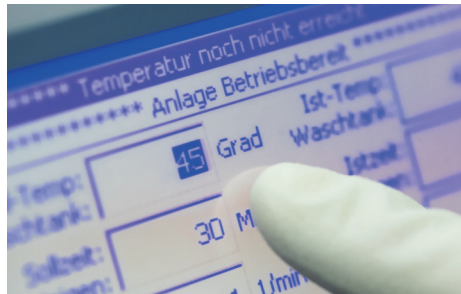
Fill the ultrasound system with **90% water*** and **BioClean 2000**. Depending on the situation, the dose of cleaner can be increased until the desired effect is achieved.

CLEANING STEP 4



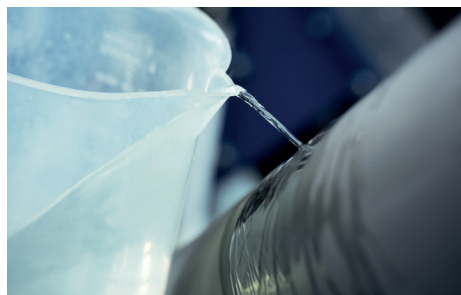
Clean the roller/sleeve for **15-20 minutes**, depending on how much residue build-up is present. The speed of rotation should be between 1-3 rpm. Repeat this step if necessary.

CLEANING STEP 2



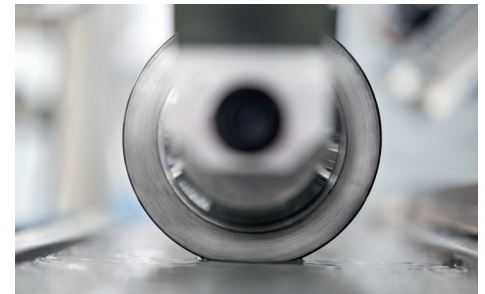
Heat the system water to **40-50° Celsius**. Ensure that the temperature is constant throughout the cleaning process to achieve optimum results.
Warning: Excessively high temperatures can impair cleaning performance.

CLEANING STEP 5



Clean the surface with water to ensure that no residues of cleaning fluid remain in the anilox roller cells.

CLEANING STEP 3



Insert the roller/sleeve that you wish to clean and ensure that **10-15%** of the surface is submerged in the cleaning tank.

CLEANING STEP 6



To prevent damage, the roller should not be packed in a protective sleeve or box before the surface has dried fully.

*Where possible, use demineralised water to keep the pH value down.